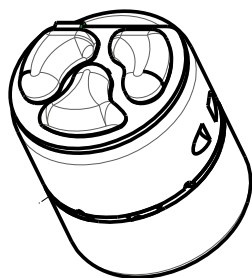
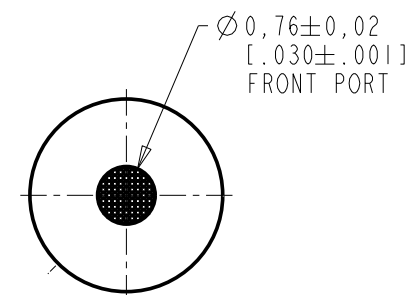
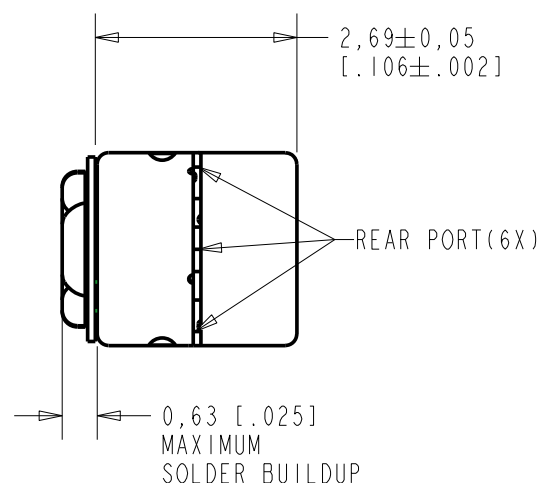
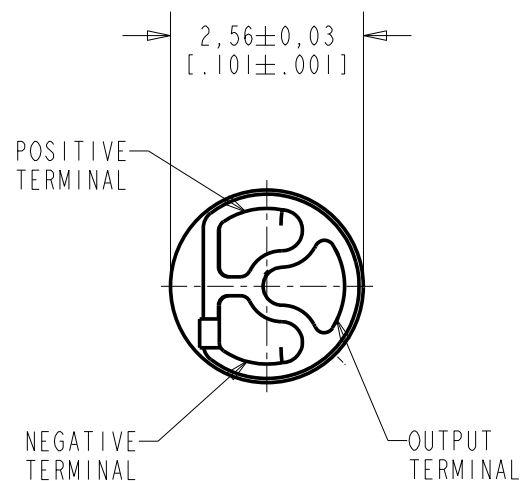


DFC-30851-000

SHT 1.1

NOTES:

1. INCREASED PRESSURE AT THE SOUND INLET CAUSES A POSITIVE GOING VOLTAGE TO APPEAR AT THE OUTPUT TERMINAL, RELATIVE TO THE NEGATIVE TERMINAL.



NOMINAL WEIGHT  
0.04 GRAMS

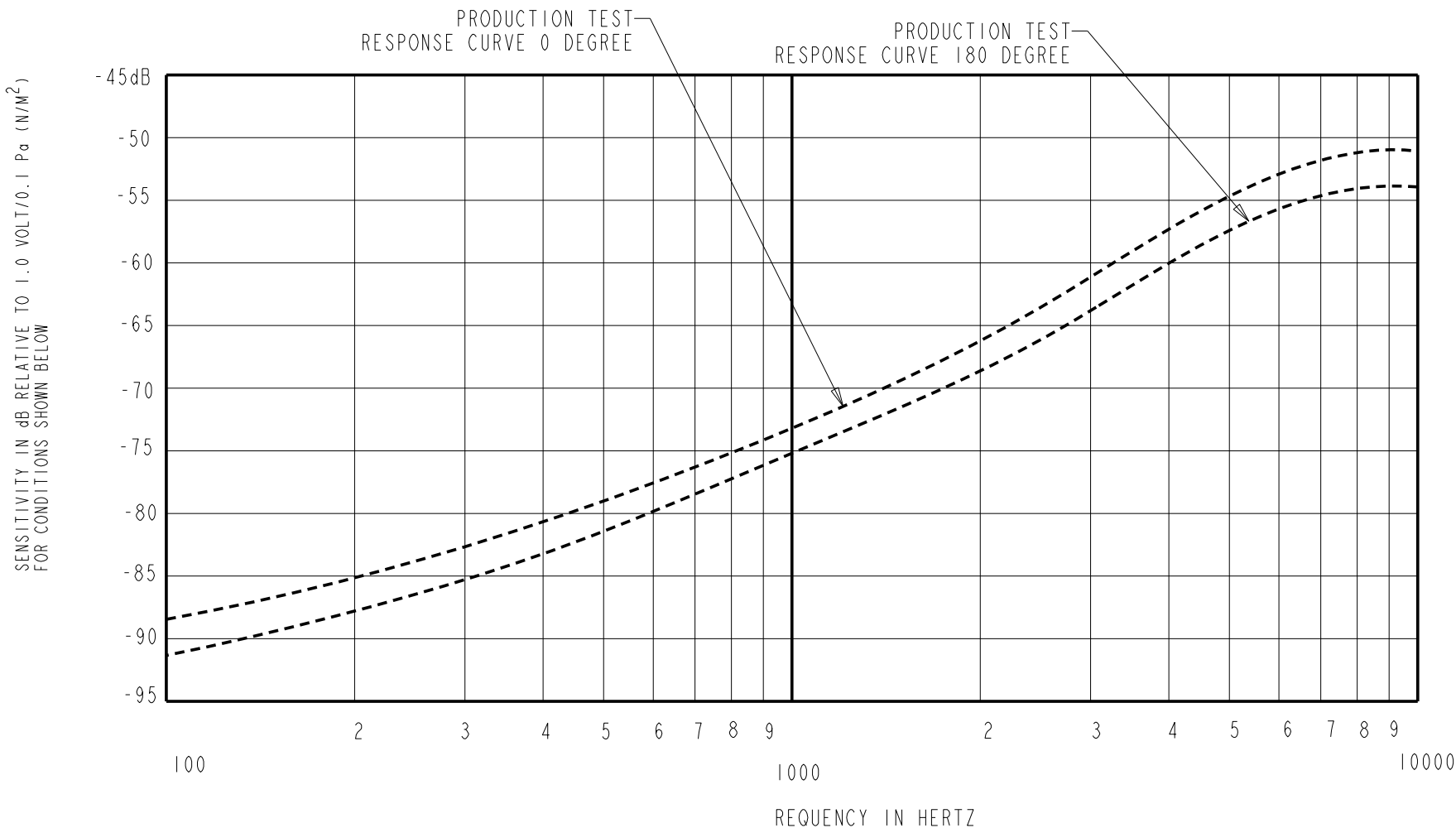
DIMENSIONS IN MILLIMETERS [INCHES]

Revision	C.O. #	Implementation Date	RELEASE LEVEL	REVISION
			Active	A
A	MI0103381	12-23-09		
SCALE: 17:1			DR. BY LSY	DATE 12-23-09
DO NOT SCALE DRAWING			CK. BY GJP	DATE 1-7-10
TITLE: MICROPHONE ASSEMBLY			APP. BY GJP	DATE 1-7-10
OUTLINE DRAWING			Rev: B	

DFC-30851-000

SHT 1.1

**KNOWLES ELECTRONICS**  
ITASCA, ILLINOIS U.S.A.

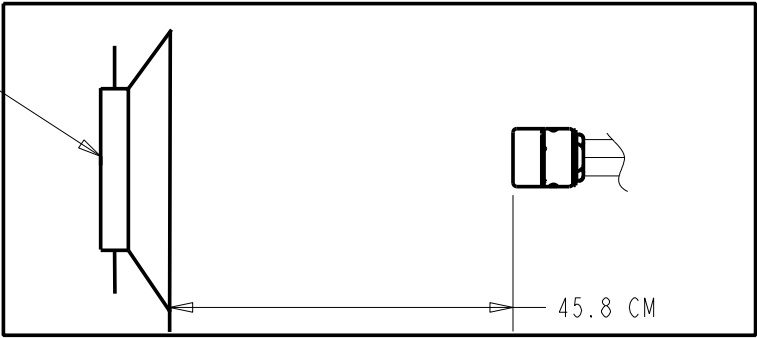


0 DEGREE SENSITIVITY				DEVICE CONFORMITY	
FREQUENCY	MIN.	NOM.	MAX.	RANGE OF DEVIATION FROM 1 kHz	
				0 DEGREE	
100	---	-88.0	---	-19.0	-11.0
1000	-77.0	-73.0	-69.0	0.0	0.0
5000	---	-58.0	---	+11.0	+19.0

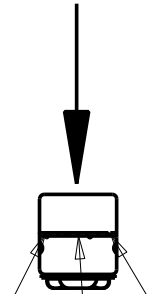
NOTES:

- MICROPHONE TO BE FUNCTIONAL WITH 3.0 VDC SUPPLY.
- SENSITIVITY VALUES INDICATED ON THIS SPECIFICATION ARE VALID AT 50% HUMIDITY.
- TEST EQUIPMENT AND FIXTURE:UNI TEST AND TA-1117-F  
PLACE PRODUCT IN A CLOSED BOX, 45.8 CM AWAY FROM 94 dB SPL SWEPT SOUND FIELD CREATED BY SPEAKER.

PIONEER TS-A6961E  
6 INCH X 9 INCH SPEAKER



FRONT PORT(0°)

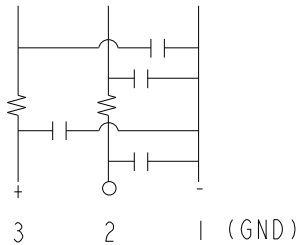


REAR PORT(180°)  
6 OPENINGS

- FRONT TO BACK RATIO MIN. 12dB AT 1KHz.

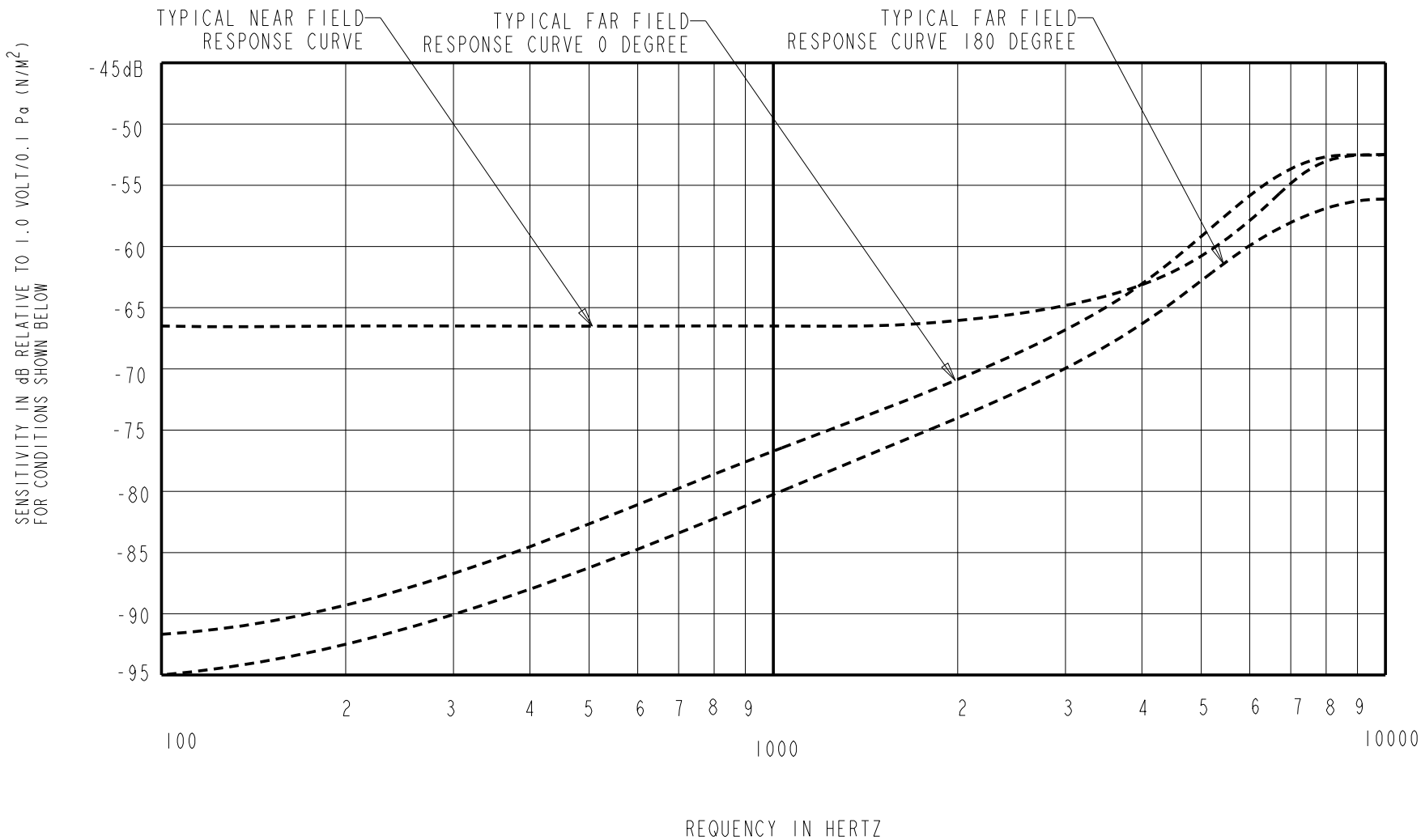
DC SUPPLY	AMPLIFIER CURRENT DRAIN	OUTPUT IMPEDANCE OHMS			"A" WEIGHTED NOISE	CAPACITANCE ±50%	
		MIN.	NOM.	MAX.		1-2	1-3
1.3V	50 µA MAX.	850	1700	2550	-93.0 dB MAX.	13pF	13pF

CAPACITANCE PROBE POINTS

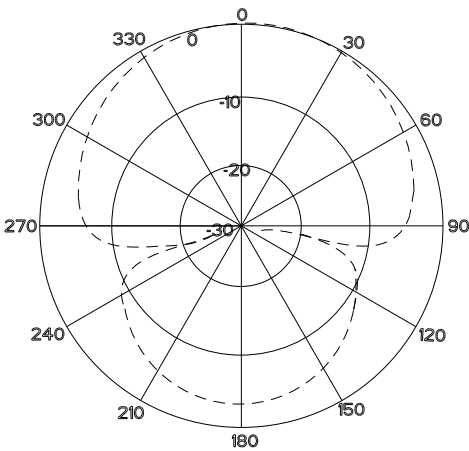


Revision	C.O. #	Implementation Date	RELEASE LEVEL		REVISION
			Active		A
A	M10103381	12-23-09			
WHEN TEST LIMITS ARE USED TO ESTABLISH INCOMING INSPECTION ACCEPTANCE/REJECTION CRITERIA, CORRELATION OF TEST EQUIPMENT WITH KNOWLES IS ALSO REQUIRED FOR ELIMINATION OF EQUIPMENT AND TEST METHOD VARIATION				DR. BY	DATE
				LSY	12-23-09
TITLE: MICROPHONE ASSEMBLY				CK. BY	DATE
				GJP	1-7-10
PRODUCTION TEST RESPONSSE				APP. BY	DATE
				GJP	1-7-10
			DFC-30851-000		
			SHT 2.1		

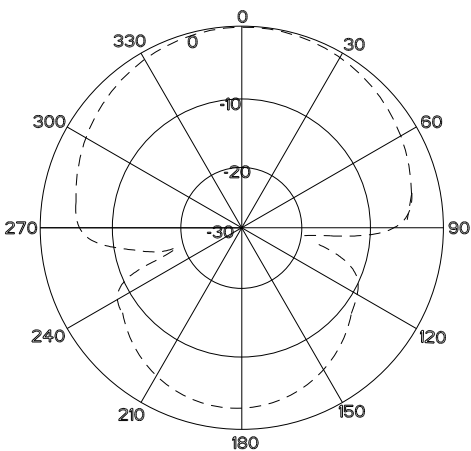
KNOWLES ELECTRONICS  
ITASCA, ILLINOIS U.S.A.



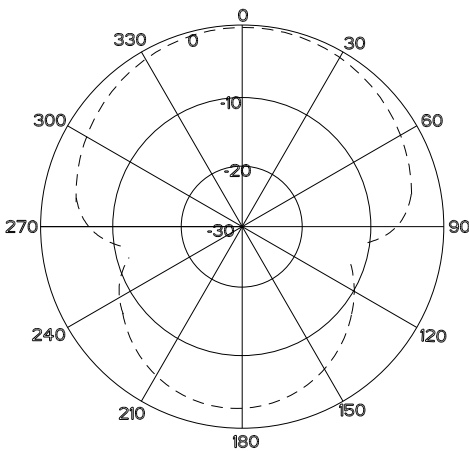
TYPICAL FREE-FIELD POLAR PATTERN AT 125Hz



TYPICAL FREE-FIELD POLAR PATTERN AT 1KHz

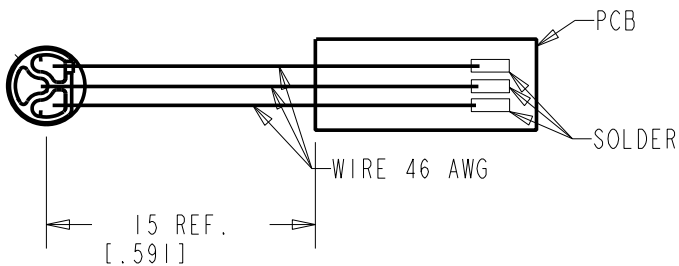


TYPICAL FREE-FIELD POLAR PATTERN AT 4KHz



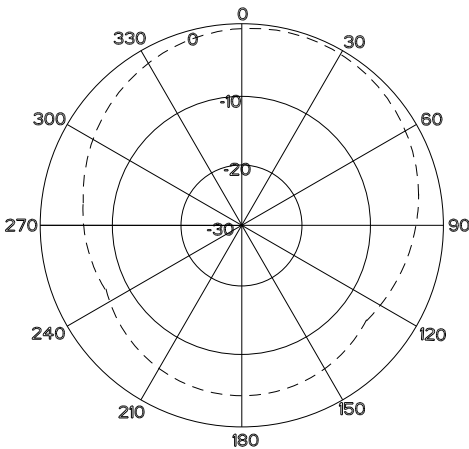
NOTES:

- MAX. SOUND PRESSURE LEVEL : 130dB
- MICROPHONE SUSPENDED ON 36 GAGE LITZ WIRE(AS SHOWN) IN ANECHOIC CHAMBER (NO FIXTURE), 1M FROM SPEAKER.



- NEAR FIELD TEST CONDITION:  
MICROPHONE SUSPENDED CENTERED 6mm ABOVE APERTURE OF B&K TYPE 4227 MOUTH SIMULATOR.

TYPICAL FREE-FIELD POLAR PATTERN AT 10KHz



KNOWLES ELECTRONICS  
ITASCA, ILLINOIS U.S.A.

Revision	C.O. #	Implementation Date	RELEASE LEVEL		REVISION
			Active		A
A	MI0103381	12-23-09			
WHEN TEST LIMITS ARE USED TO ESTABLISH INCOMING INSPECTION ACCEPTANCE/REJECTION CRITERIA, CORRELATION OF TEST EQUIPMENT WITH KNOWLES IS ALSO REQUIRED FOR ELIMINATION OF EQUIPMENT AND TEST METHOD VARIATION				DR. BY	DATE
				LSY	12-23-09
				CK. BY	DATE
				GJP	1-7-10
TITLE: MICROPHONE ASSEMBLY		DFC-30851-000		APP. BY	DATE
				GJP	1-7-10
REFERENCE TYPICAL PERFORMANCE		SHT 2.2			